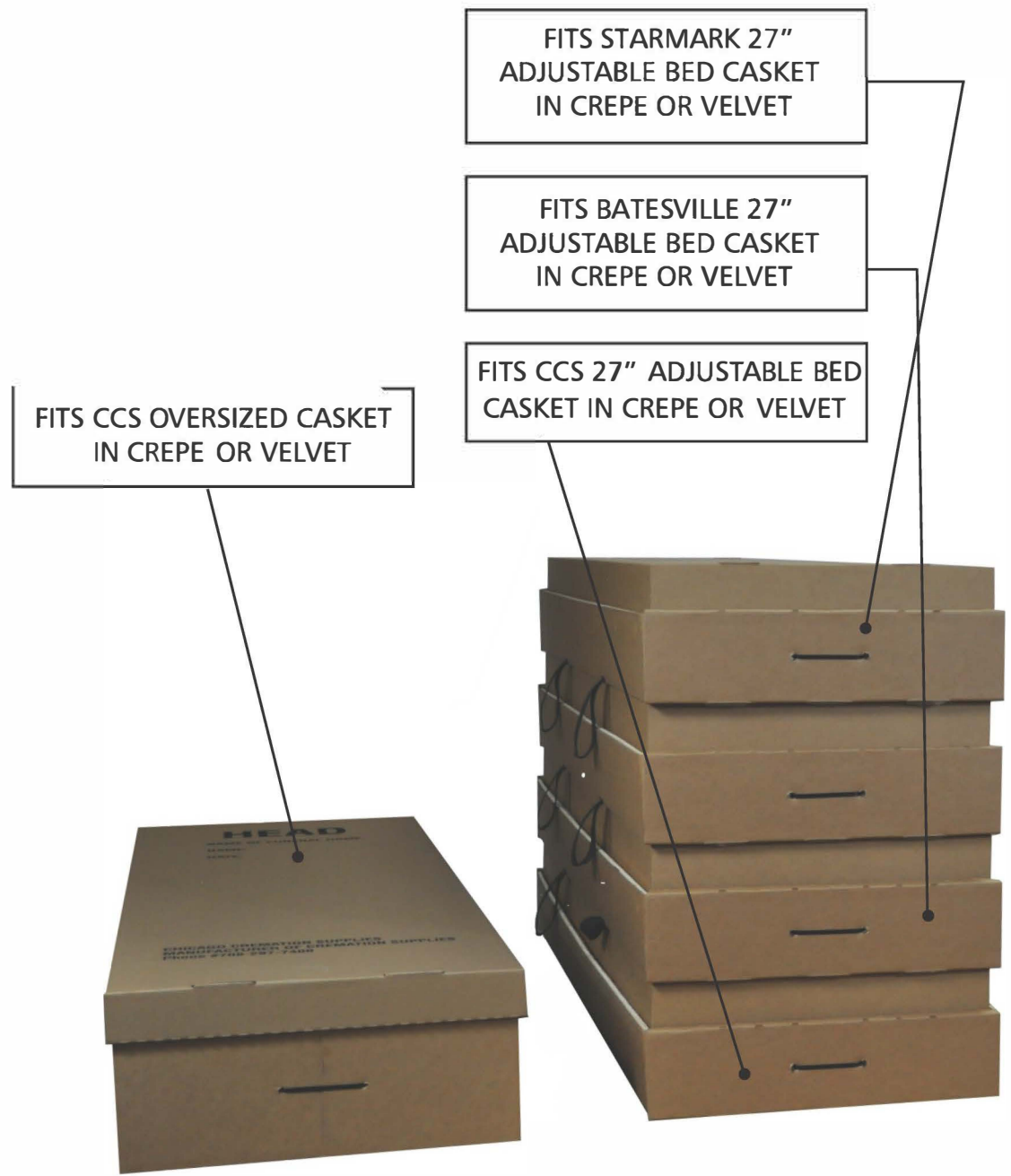




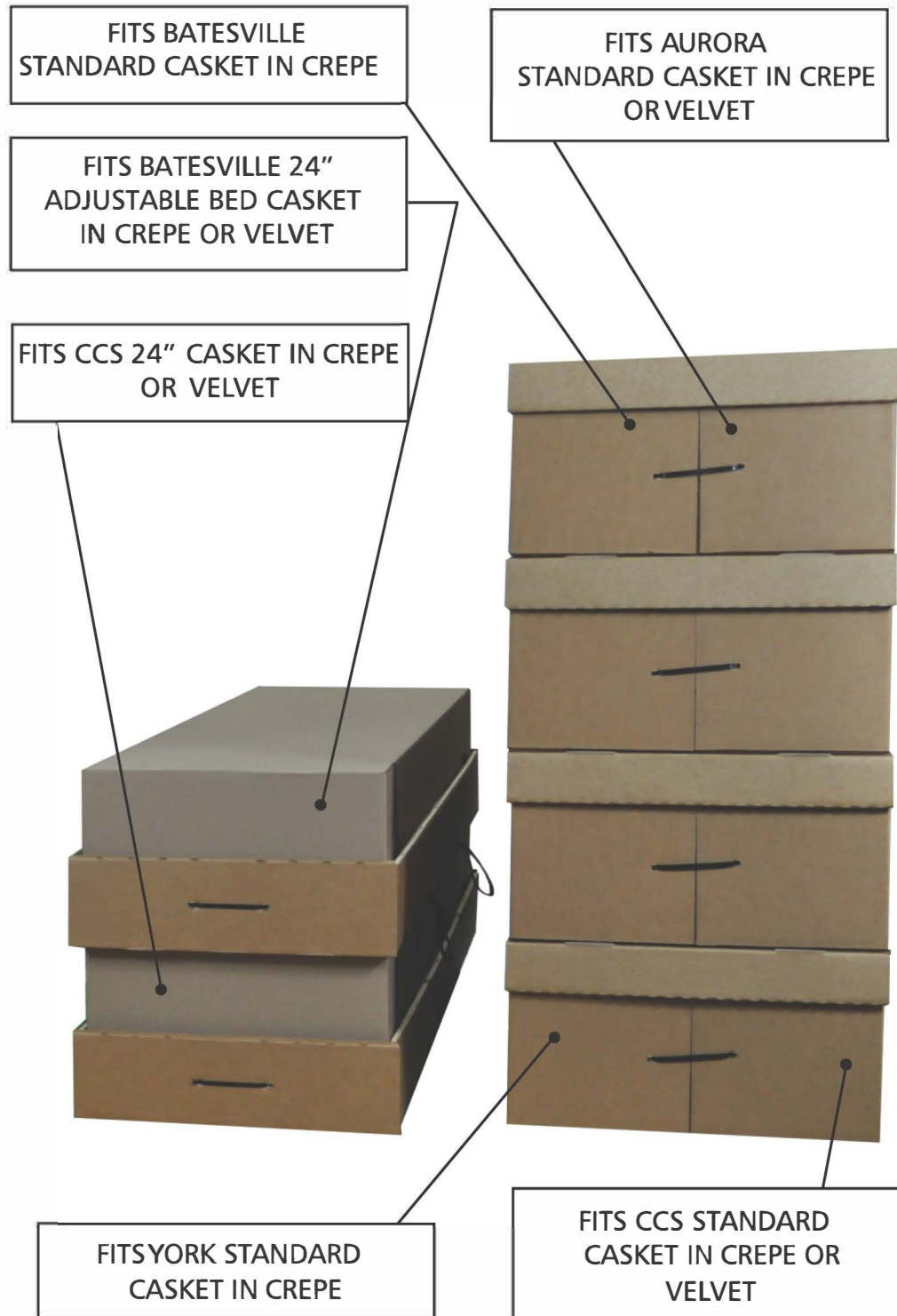
**Full Line  
Catalog  
8th Edition**

# INSERTS THAT



- No assembly required
- Leak resistant liner
- Wood reinforced sides
- Interiors designed to match your current rental casket

# FIT ALL MAJOR BRANDS



## EVERYTHING YOU NEED IS INCLUDED

We manufacture several different rental inserts to fit all major casket brands, ensuring a quality presentation every time.  
(See pages 2 and 3 for examples)

Our beautiful hand-tailored inserts are matched to all casket manufacturers, pre-assembled and ready to use.



Inserts include a pillow, throw, overlay, 6 handles, a sheet, positioning shim, Velcro skirt and 2" mattress pad.

Our standard 27" casket inserts have a full 5" foam padding and a positioning shim inserted under the foam for optimum presentation.

Casket inserts are designed to fit all major casket brands and are hand-tailored with the same quality and attention to detail as all our other inserts. Simply specify the brand rental casket your funeral home has. We have all brand inserts and styles.  
(See pages 2 and 3 for examples.)

No assembly required, our inserts arrive at your door ready to use. Everything you need is included.

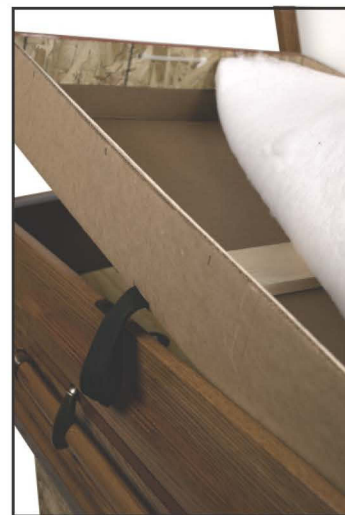
All the material is matched to your rental casket head panel, velvet interiors are also available.

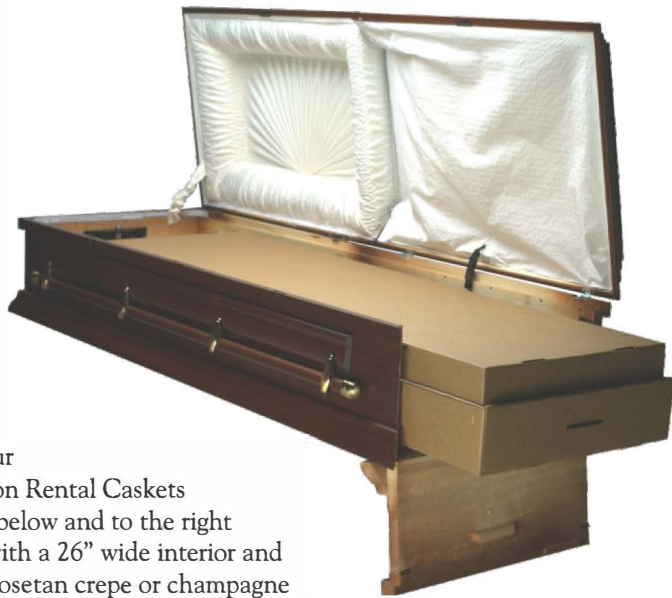
**Our New Positioning Shim is included in each rental insert for non-adjustable bed rental caskets.**



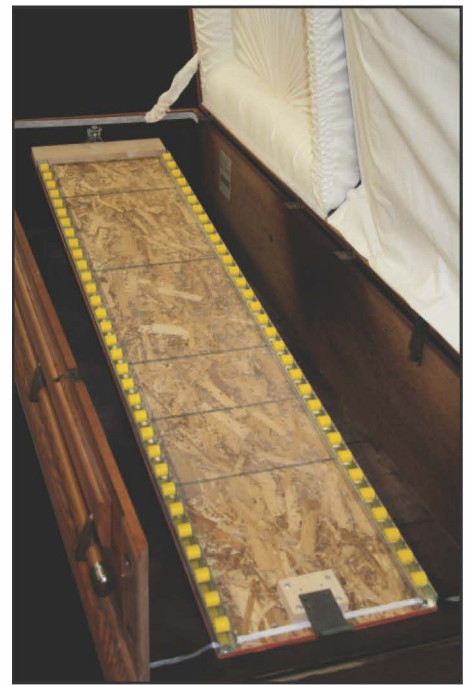
## THE EASY JACK INSERT IS THE STRONGEST AVAILABLE

The CCS *EASY JACK* insert is for our 27" and 24" rental caskets. This specially designed insert comes with heavy nylon strap handles supported with 1" x 4" pine planking making it the strongest container available, while eliminating the need for a riser tray.





Our four Tradition Rental Caskets shown below and to the right come with a 26" wide interior and either rosetan crepe or champagne velvet interiors. The foot end drop door is mitered to ensure consistent alignment for a quality presentation.



Our Easy Jack adjustable bed device makes your job easier and your presentation a snap...up and down. Tradition also comes with a heavy bed and 64 side rollers helping the insert glide in and out effortlessly.



*Tradition  
Oak  
with Crepe Interior*  
Includes 3 free inserts



*Tradition  
Poplar  
with Crepe Interior*  
Includes 3 free inserts

*Tradition  
Cherry  
with Velvet Interior*  
Includes 3 free inserts



*Tradition  
Pine  
with Crepe Interior*  
Includes 3 free inserts  
Available in 24" or 27"



WOOD RENTAL CASKETS

## *Introducing our New Key Cremation Box*



*Dimensions (Flat): 96" x 48"*

*Dimensions (Assembled): 76 1/8" x 26 5/16" x 12"*



- *Locking Handles*
- *No Zip Ties Required*
- *Reinforced / Locking Lid*
- *Available with Wood and Plastic Option*



## Cremation Boxes

Our cremation boxes are made of the highest quality corrugated cardboard. The boxes have double walled construction and are shipped flat for easy storage. (Optional leak resistant bags/liners and plywood supports are available for an additional charge.) Each box has hand cut outs for easy transportation and is available with or without lids.



**Zip ties are included for easy assembly of our direct cremation boxes.**

### STANDARD BOX

Used for direct cremation, short term storage and minimal transportation of body.

Flat: 97" x 47.5"

Assembled: 73" x 23.5" x 12"

### PREMIUM BOX - WAX COATED

We also offer the Michelman crematory container which has a leak resistant coating. This box is 30% stronger than our Standard Box.

Flat: 95" x 42.5"

Assembled: 71" x 22" x 12"

### OVERSIZED BOX

This box is 70% stronger than our standard box and is used for longer storage and designed for larger bodies.

Flat: 103" x 50"

Assembled: 79" x 26" x 12"

### Wood Base Direct Cremation Tray

We offer solid cremation trays giving the best support and ease of use at a competitive price.



Shipped storage dimensions: 84.25" x 24" x 4"  
Inside tray dimensions (assembled): 81" x 22" x 14"

### Wood Base Combo Tray For Non-Casketed Remains

This shipping container has a leak resistant lining, head rest, interior securing straps over foam mattress, 1" x 4" pine frame with solid plywood bottom, 8 heavy duty handles, securing straps with removable buckles, protective corners, and is 3rd party tested and engineered.



Shipped storage dimensions: 84.25" x 24" x 4"  
Inside tray dimensions (assembled): 81" x 22" x 14"



All air trays are stamped and certified with the IPPC logo guaranteeing bug free wood.

### Wood Base Air Tray for Casketed Remains

Our Air Tray has a 1" x 4" pine frame with solid plywood bottom, 8 heavy duty handles, securing straps with removable buckles, protective corners, shipping label, and is 3rd party tested and engineered. All Air Trays are IPPC stamped bug free and ATA tested and approved for domestic and international air travel.



Shipped storage dimensions: 86.25" x 32" x 4"  
Inside tray dimensions (assembled): 84" x 30" x 23"



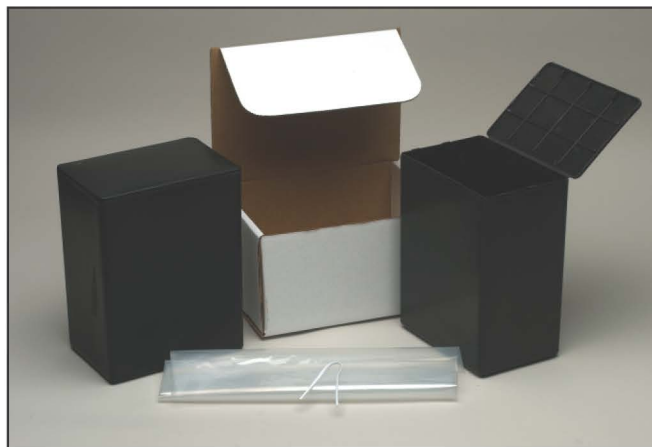
### Triple Wall Cremation Tray

Easy Trays have a triple wall (military grade) corrugated base, 8 carrying straps and includes an over pack. Easy Trays are lighter than wood-based trays and burn cleaner and more efficiently than OSB or plywood-based trays. These trays have been weight tested to 715 lbs. Available in 24" or 30" widths.



*Urn - White*

White plastic urns (includes bag and tie)  
 2 Sizes Available: Small: 67 cubic inches  
 Medium: 106 cubic inches



*Urn, Mailer, Bag*

Includes Black plastic urn, bag and tie.  
 Standard size: 200 cubic inches.  
 Extra plastic bags with ties are available for an additional charge.



*Cremation Rollers*



*Corrugated Urn*



*Tracking Discs*

Generic tracking discs are available in lots of 100. You can also customize tracking discs with your crematory or funeral home name and preferred numbers. Customized tracking discs are also available in lots of 100.



*Corrugated Urn Mailer*